

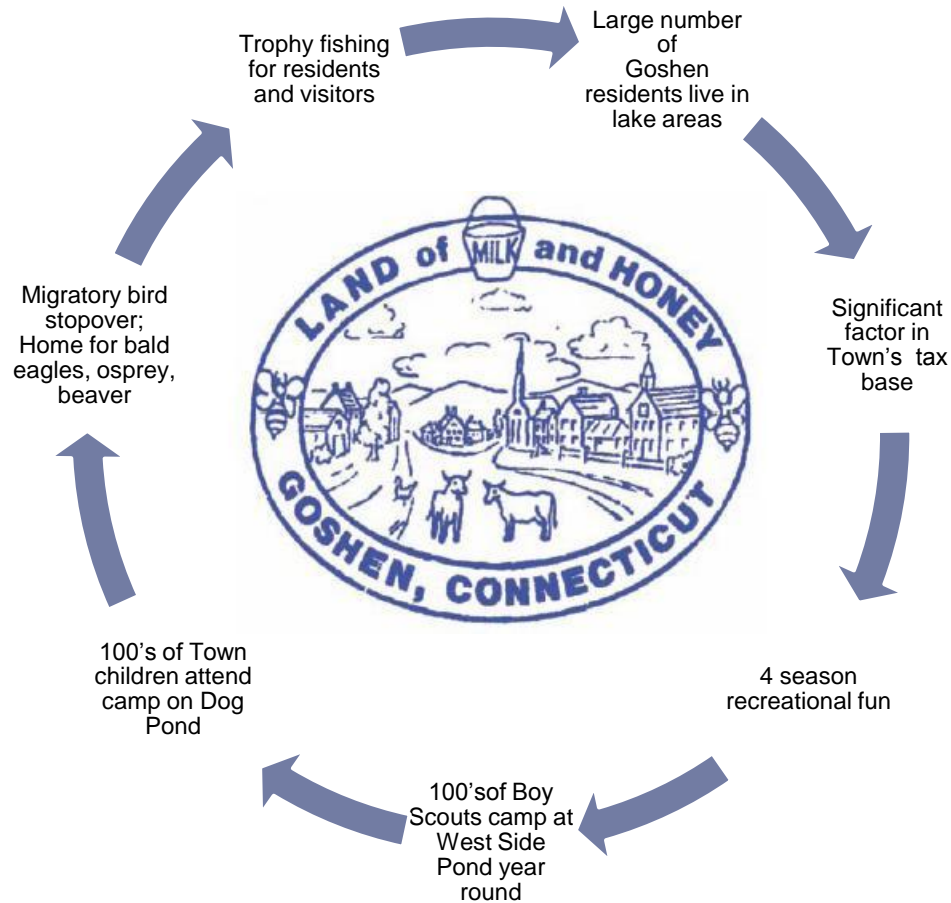


# Goshen's Public Lakes

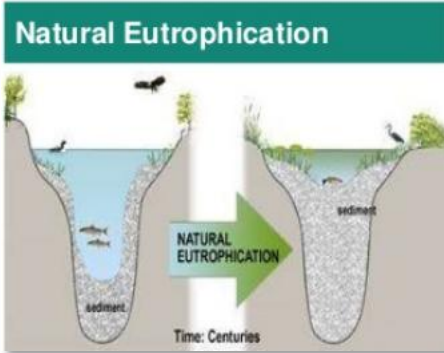
## *An Important Community Resource*

Town of Goshen  
Board of Finance Meeting

# Goshen's Public Lakes Are Central to Our Community



# 5 Key Threats to Our Public Lakes



## ▶ Eutrophication – The natural threat

- ▶ Over a period of centuries, lakes change
- ▶ Fill in, more organic material in water, more plant life
- ▶ The impact of human activity accelerates this process

## ▶ Invasive aquatic plants are taking over

- ▶ All 3 lakes have multiple species of invasive plants
- ▶ Transported by boats using State launch
- ▶ Speeds sedimentation and eutrophication process



## ▶ Conditions in our lakes are prime for Harmful Algae Blooms (HAB)

- ▶ Can produce toxins that kill wildlife and harm humans
- ▶ Nutrient sources include storm water runoff, fertilizer use, failing septic, natural sources
- ▶ Can result in closing of a lake to many activities



# 5 Key Threats to Our Public Lakes

- ▶ Lack of education about user & owner responsibilities
  - ▶ Cleaning boat props & bilges
  - ▶ Property landscaping, pesticide use
  - ▶ Rain water management
  - ▶ Septic maintenance, detergents
- ▶ Impact of the surrounding environment
  - ▶ Road stormwater runoff
  - ▶ Use of chemicals on roadways, pesticides
  - ▶ Construction projects
  - ▶ Land development
  - ▶ Agriculture



# Now and Then: Dog Pond

---



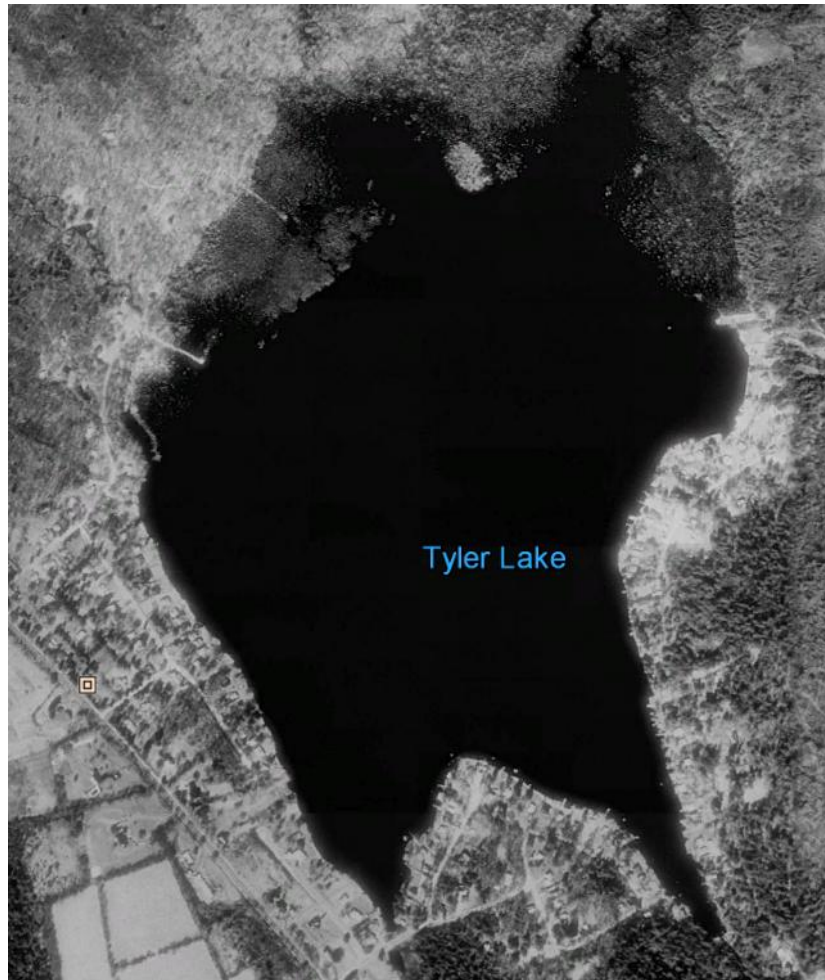
1991



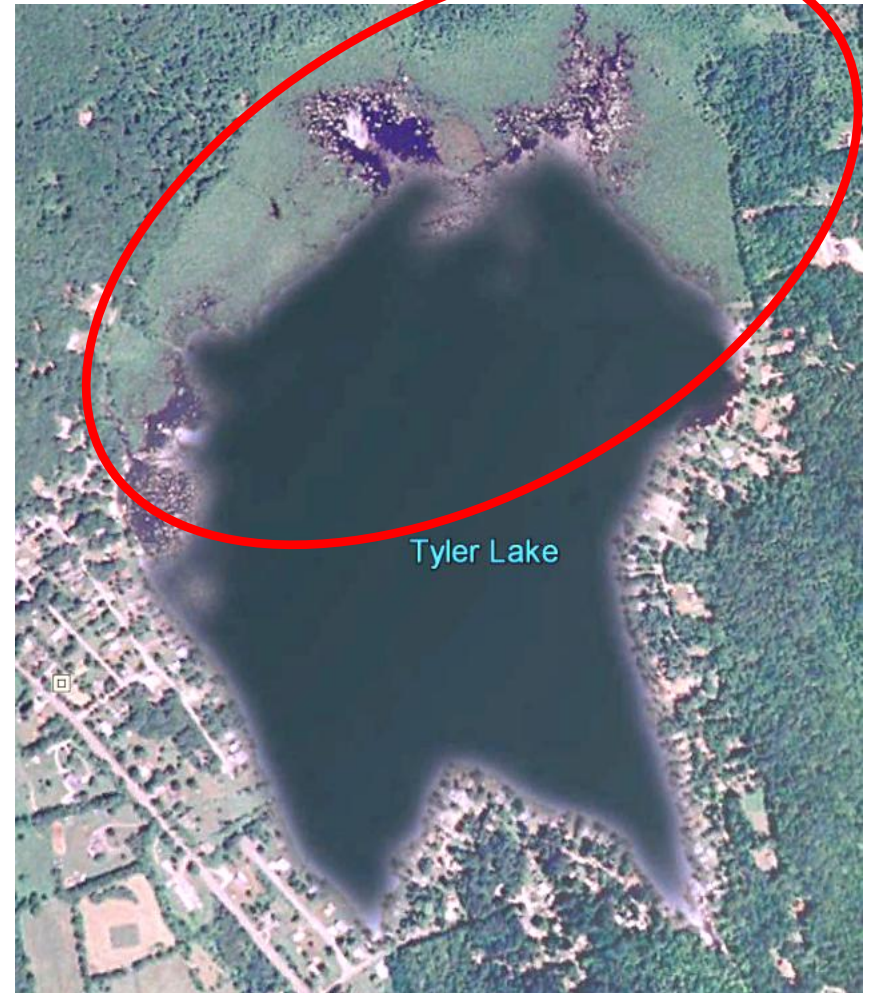
2015



# Now and Then: Tyler Lake



1991



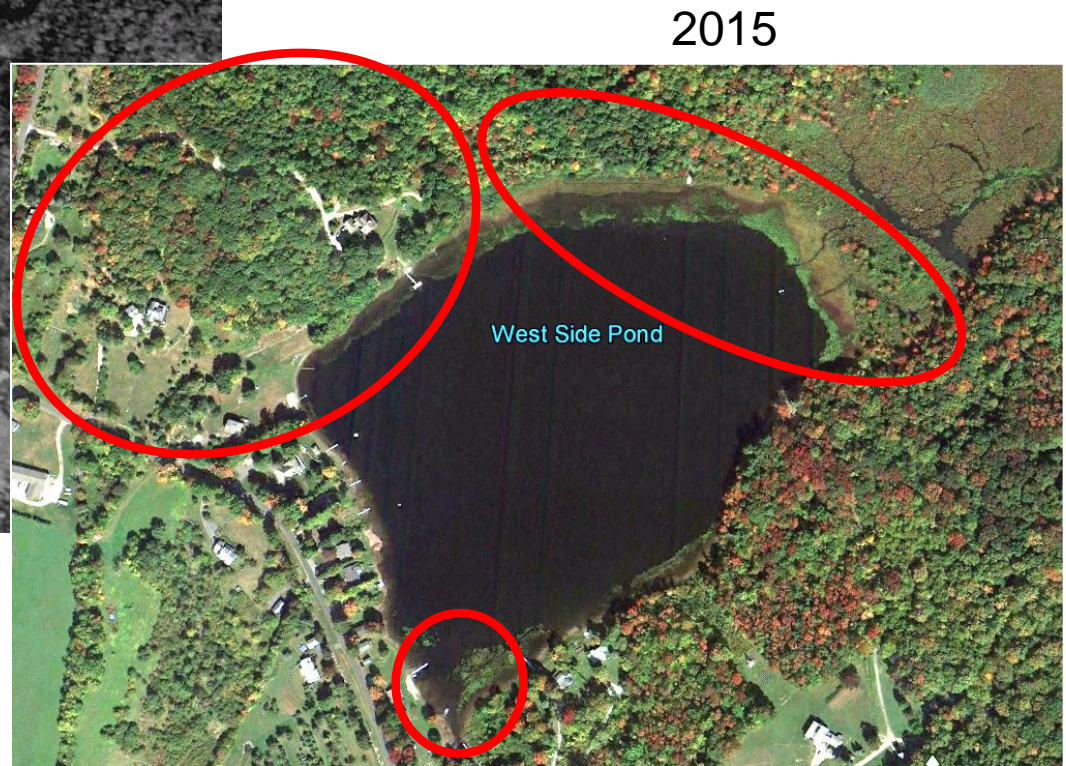
2015

# Now and Then: West Side Pond

---



1991



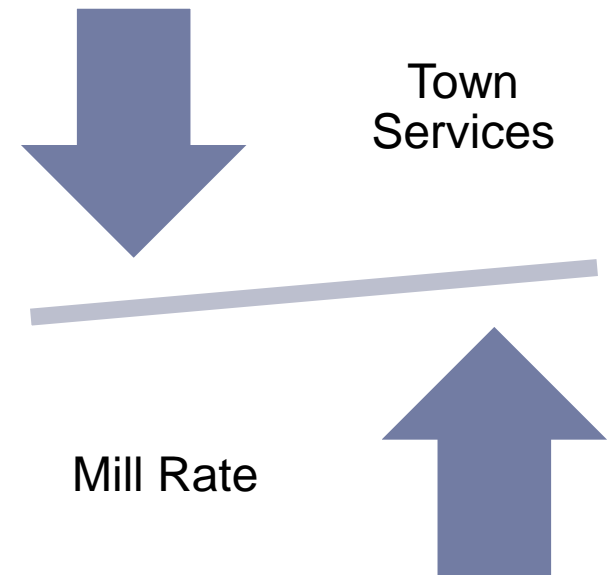
2015



# Economic Value of our Public Lakes

---

- ▶ Properties in lake areas tend to assess higher than similar properties elsewhere due to their presence near a lake<sup>1</sup>.
- ▶ A decline in the quality of the lakes will lead to a decline in the assessed value of these properties<sup>1</sup>
- ▶ This will result in UPWARD pressure on the mill rate and/or pressure to DECREASE municipal services.

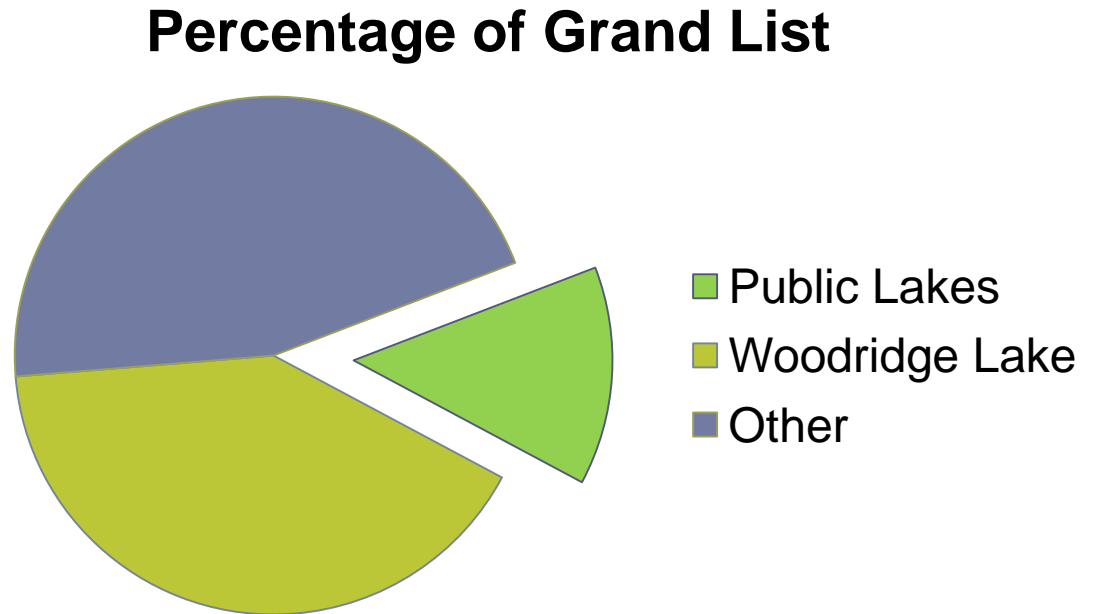




# Economic Value of Our Public Lakes

---

- Our 3 public “lakes areas” represent about 15% of Grand List
- Our 4 residential lakes areas represent over 50% of Grand List



Unless our lakes are maintained, natural processes will result in a decline in their value and a reduction in the contribution to the tax base.

# Dealing With It: The Year We Get Serious

---

- ▶ Each lake organizing an effort adapted to its needs
  - ▶ Testing, plant surveys, community education, remediation
- ▶ This is a “forever problem”
  - ▶ Requires a sustainable approach
  - ▶ Tyler and West Side Pond forming a 501c3 non-profit
  - ▶ All lakes putting plans in place for long-term funding plans
    - Primary funding source is property owners and “friends”
    - Recurring fund raising event(s)
    - Pursuit of foundation grants



# Dealing With It: The Plans

	West Side Pond	Tyler Lake	Dog Pond	Total
<b>USES</b>				
Legal, Incorporation	\$1,000	\$500	\$0	
Registration, Connecticut	\$250	\$250	\$0	
IRS Form 1023 Filing Fee	\$850	\$850	\$0	
Water Quality Study (NEAR)	\$8,850	\$18,740	\$4,300	
Remediation Program	\$15,000	\$20,500	\$22,000	
Education, Fund raising Activities	\$2,600	\$0	\$0	
Subtotal, Expense	\$28,550	\$40,840	\$26,300	\$95,690
<b>SOURCES</b>				
Donations, Fundraising Event, Grants	\$18,550	\$30,840	\$16,300	
Town of Goshen	\$10,000	\$10,000	\$10,000	
Subtotal, Sources	\$28,550	\$40,840	\$26,300	\$95,690
<b>EXCESS OF SOURCES OVER USES:</b>	\$0	\$0	\$0	\$0

Over half of the \$95,000 needed for the 2016 plans has been raised

- \$26,300+ donations via Town lakes fund for Dog & West Side Pond
- \$22,000+ donations for Tyler via Tyler Lake Protective Association

# Role of the Town

---

- ▶ Grateful to the Selectmen for organizing the lakes
- ▶ To help protect the economic value generated by the lakes, the Town should be willing to help support the efforts of the lake groups, financially
- ▶ The proposed \$10,000 per lake from the Town will be a **big help** in meeting our 2016 Budgets
  - ▶ Will be used to pay for professional services for monitoring, testing, surveying, and planning
  - ▶ About 35% - 40% of the 2016 need
  - ▶ On par with assistance offered by other towns



# Preserving an Asset of the Community

- ▶ The quality of these lakes is important to the Town and its citizens.
- ▶ Critical to preserve for the generations to come
- ▶ The lakes are stepping up
  - ▶ Committed to raising over \$50,000 for 2016 programs
  - ▶ Taking actions that will benefit all who use the lakes
- ▶ We thank the Board of Selectmen for their leadership
- ▶ We thank the Board of Finance for their support of the appropriation





Tyler Lake



Dog Pond

# Thank You!



West Side Pond